

# LIFE SAFETY SYMBOL LEGEND

APPLIES TO L3 SERIES OF DRAWINGS ONLY

DESIGNATOR MATRIX			
	BARRIER (NONE)	BARRIER (EXISTING)	PARTITION (EXISTING)
2 HR FIRE	—	— • — • —	—
1 HR FIRE	—	— • —	—
INCIDENTAL	—	—	— • • • • • —

**NOTES:**

- WALL DESIGNATIONS ON THE L3 SERIES OF DRAWINGS ARE FOR GRAPHICAL PURPOSES ONLY AND MAY NOT REPRESENT THE ACTUAL WALL/PARTITION CONSTRUCTION.
- REFER TO THE CONTRACT DOCUMENTS, INCLUDING THE LIFE SAFETY SYMBOLS LEGEND AND A01, A1 AND A2 SERIES OF DRAWINGS, FOR ACTUAL WALL/PARTITION TYPES AND CONSTRUCTION REQUIREMENTS.
- RATING OF BEARING OR NON-BEARING WALLS ARE PER TABLE 601 AND SECTION 602.1 AND DO NOT REQUIRE PROTECTED OPENINGS.

**SYMBOLS**

Diagram 1: A rectangular room labeled '1205'. A door is shown with a barrier hardware symbol (a line with a semi-circle) and an arrow pointing out, labeled '798 1280'. A dimension line indicates the door width is 33".

Diagram 2: A rectangular room with a door labeled '798 1280' and an arrow pointing out. A dimension line indicates the door width is 33".

Diagram 3: A horizontal line with a barrier hardware symbol and an arrow pointing right, labeled '798 1280'.

Diagram 4: A horizontal line with a barrier hardware symbol and an arrow pointing right, labeled '798 1280'.

Diagram 5: A horizontal line with a barrier hardware symbol and an arrow pointing right, labeled '798 1280'.

Diagram 6: A horizontal line with a barrier hardware symbol and an arrow pointing right, labeled '798 1280'.

Diagram 7: A horizontal line with a barrier hardware symbol and an arrow pointing right, labeled '798 1280'.

Diagram 8: A horizontal line with a barrier hardware symbol and an arrow pointing right, labeled '798 1280'.

Diagram 9: A horizontal line with a barrier hardware symbol and an arrow pointing right, labeled '798 1280'.

Diagram 10: A horizontal line with a barrier hardware symbol and an arrow pointing right, labeled '798 1280'.

Diagram 11: A horizontal line with a barrier hardware symbol and an arrow pointing right, labeled '798 1280'.

Diagram 12: A horizontal line with a barrier hardware symbol and an arrow pointing right, labeled '798 1280'.

Diagram 13: A horizontal line with a barrier hardware symbol and an arrow pointing right, labeled '798 1280'.

Diagram 14: A horizontal line with a barrier hardware symbol and an arrow pointing right, labeled '798 1280'.

Diagram 15: A horizontal line with a barrier hardware symbol and an arrow pointing right, labeled '798 1280'.

Diagram 16: A horizontal line with a barrier hardware symbol and an arrow pointing right, labeled '798 1280'.

Diagram 17: A horizontal line with a barrier hardware symbol and an arrow pointing right, labeled '798 1280'.

Diagram 18: A horizontal line with a barrier hardware symbol and an arrow pointing right, labeled '798 1280'.

Diagram 19: A horizontal line with a barrier hardware symbol and an arrow pointing right, labeled '798 1280'.

Diagram 20: A horizontal line with a barrier hardware symbol and an arrow pointing right, labeled '798 1280'.

ROOM NUMBER

INDICATES PANIC HARDWARE

DIRECTION OF EGRESS

EGRESS LOAD CAPACITY

NUMBER OF OCCUPANTS

NUMBER OF OCCUPANTS

INDICATES PANIC HARDWARE

DIRECTION OF EGRESS

NUMBER OF OCCUPANTS

EGRESS LOAD CAPACITY

CLEAR OPENING

MAXIMUM TRAVEL DISTANCE

COMMON PATH OF TRAVEL

FIRE EXTINGUISHER CABINET; TOP OF CABINET DOOR TO BE 48" AFF

FIRE EXTINGUISHER BRACKET

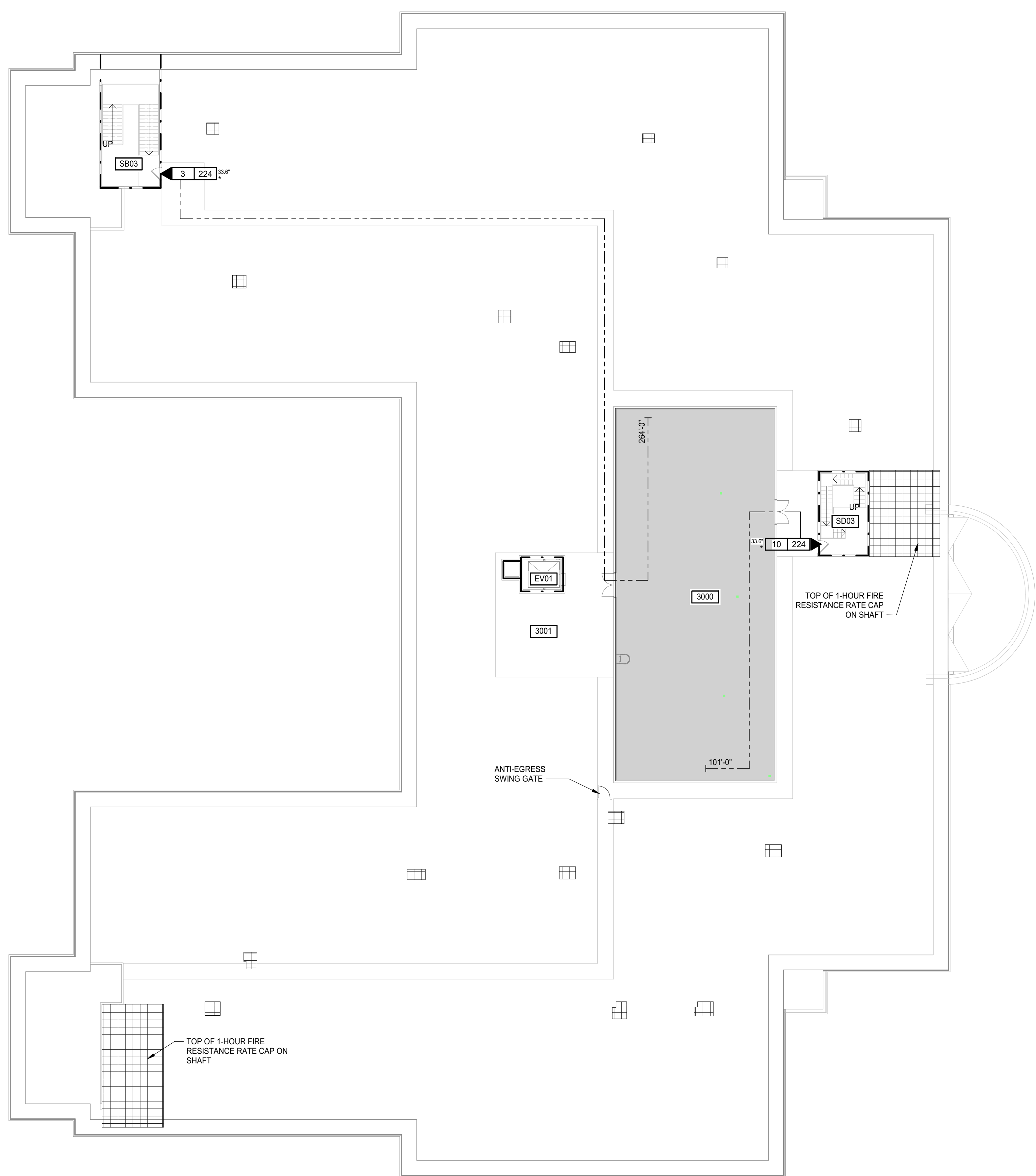
BUSINESS AREA

ASSEMBLY AREA (ACCESSORY)

ACCESSORY STORAGE, MECHANICAL, EQUIPMENT

HORIZONTAL FIRE RESISTANCE RATED ASSEMBLY, RATING SHALL MATCH THE ASSOCIATED SECOND FLOOR ASSEMBLY

# GENERAL NOTES



# ATTIC LIFE SAFETY PLAN

